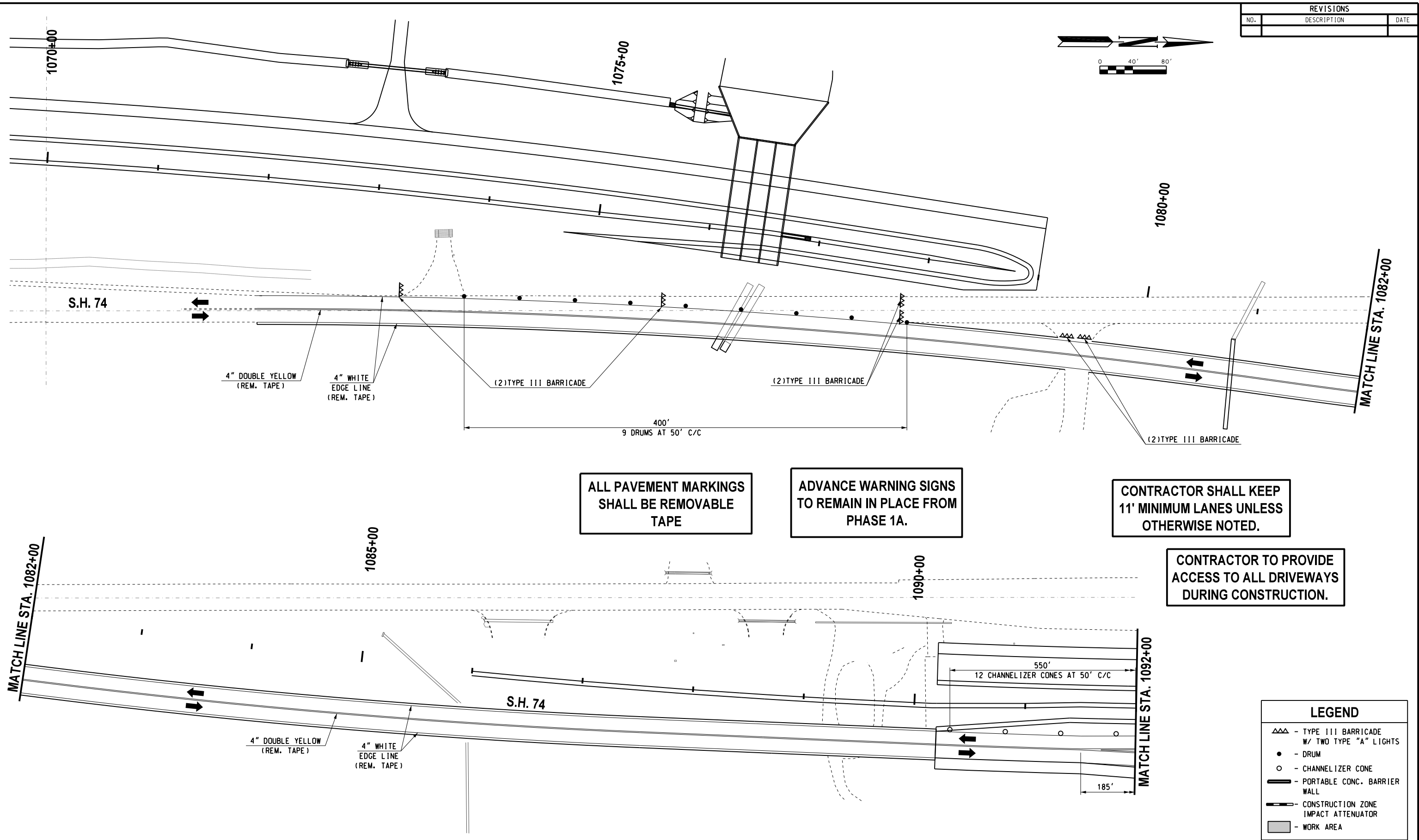
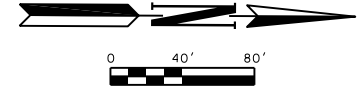


REVISIONS		
NO.	DESCRIPTION	DATE



ALL PAVEMENT MARKINGS SHALL BE REMOVABLE TAPE

ADVANCE WARNING SIGNS TO REMAIN IN PLACE FROM PHASE 1A.

CONTRACTOR SHALL KEEP 11' MINIMUM LANES UNLESS OTHERWISE NOTED.

CONTRACTOR TO PROVIDE ACCESS TO ALL DRIVEWAYS DURING CONSTRUCTION.

LEGEND	
△△△	- TYPE III BARRICADE W/ TWO TYPE "A" LIGHTS
●	- DRUM
○	- CHANNELIZER CONE
▬	- PORTABLE CONC. BARRIER WALL
▬▬▬	- CONSTRUCTION ZONE IMPACT ATTENUATOR
■	- WORK AREA

Design	RWR	08/10/17
Drawn	GDB	08/10/17



**TRAFFIC CONTROL**  
**PHASES 2M (SHEET 1 OF 7)**  
**S.H. 74 (STA. 1070+00 TO 1092+00)**  
 State Job No. 14964(08) Sheet No. 152

08/10/17 G:\Projects\16628 SH 74 @ NW 178th, NW 192nd & NW 206th\CAD\TC PHASE 2M\ISH 74.dgn